

# GREEN AND HEALTHY SCHOOLS

A Project of Climate Jobs RI



**Green and Healthy Schools**  
A Project of Climate Jobs RI

## About

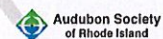
Climate Jobs RI is a broad and growing coalition of labor unions, environmental advocates, and community organizations that came together in early 2021 with the shared vision for a Just Transition to a Green Economy in Rhode Island.

## Principals

1. Establish emissions limits leading to economy-wide 100% net-zero emissions by 2050
2. Establish state-wide, cost-effective investments in community resiliency
3. Maximize family-sustaining job growth
4. Prioritize solutions developed by underserved communities



## The Coalition:



[www.climatejobsri.org](http://www.climatejobsri.org)



## Campaign Goals

1. Overhaul the state's outdated schools to provide a safe, healthy, and COVID-resistant environment for all teachers, students, and staff
2. Address the climate change crisis and reduce air pollution by making all school buildings zero-carbon
3. Creating thousands of good paying, union jobs that uplift local communities
4. Save districts \$ by slashing school energy use
5. Teach students about the climate crisis and how they can pursue union jobs building the clean energy economy



311 public schools



143,557 students



13,950 educators



school community



**1 in 6 Americans step foot in public school buildings everyday**



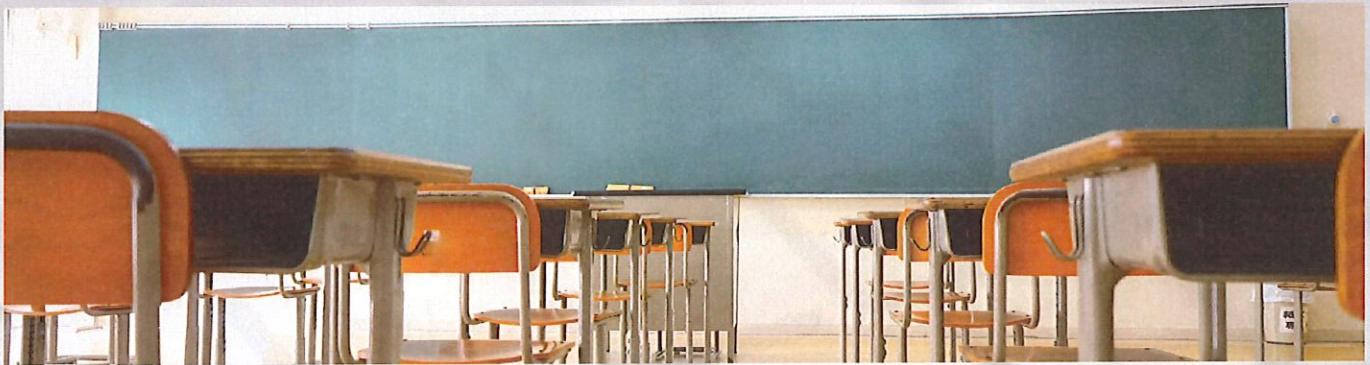


## State of RI Public Schools

56	50,500	\$2.2B
Years Old Average Age of School Buildings	Total Building Deficiencies	Estimated Costs of Building Deficiencies

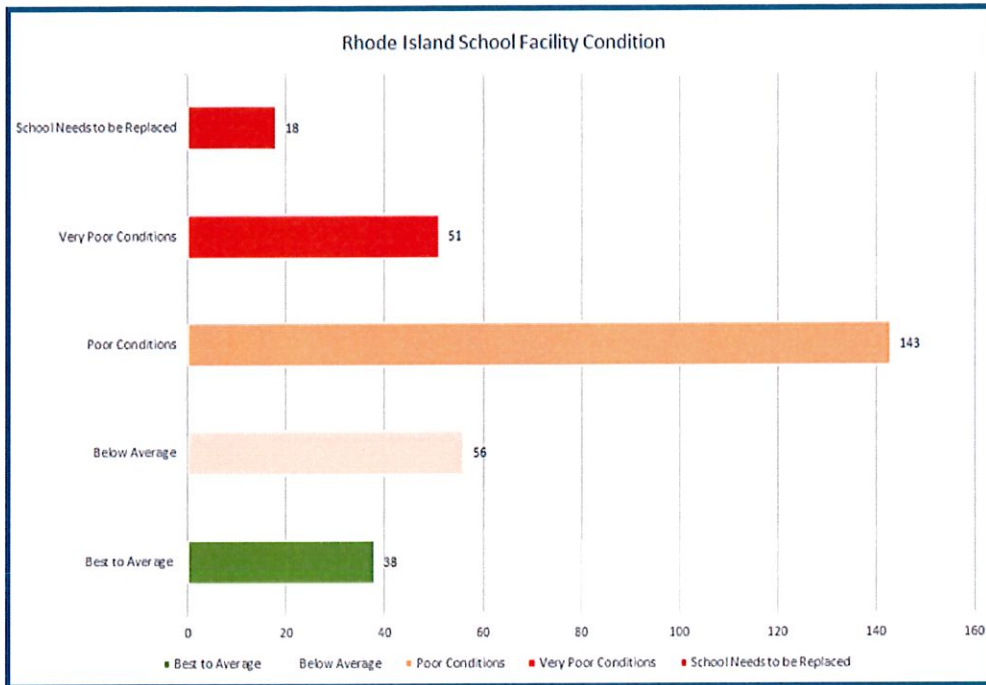


Source: School Building Authority State of Rhode Island Schoolhouses  
September 2017 Report



### Building Deficiencies:

- Mold and Water Damage
- Leaky Deteriorating Rooftops
- Crumbling Ceilings
- Poor Ventilation
- Rotted Pipes
- Lead Service Lines
- Antiquated Heating and Air Conditioning Systems
- Outdated Electrical Grids



Areas with the poorest conditions & highest building deficiencies:

- Providence
- Pawtucket
- Woonsocket
- North Providence
- Central Falls
- Warwick

Source: School Building Authority State of Rhode Island Schoolhouses September 2017 Report

# THE PROBLEM

## PHYSICAL RISKS

Overcrowding and building deficiencies lead to unnecessary physical risks

## HEALTH HAZARDS

School building conditions affect student health, thinking, and performance

## RACIAL AND ECONOMIC INJUSTICE

Decades of disinvestment in black and brown communities and low income communities translate into poor conditions and high building deficiencies

## ENVIRONMENTAL IMPACT

Energy use from buildings represents a significant share of the state's dependence on fossil fuels



## Physical Risks

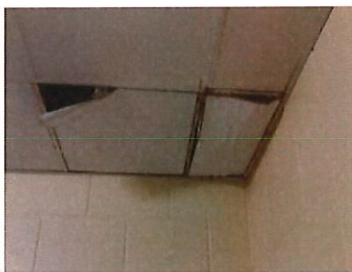
Overcrowding and building deficiencies lead to unnecessary physical risks



Source: School Building Authority State of Rhode Island Schoolhouses September 2017 Report

# 54%

OF RHODE ISLAND'S TRADITIONAL SCHOOLS CAN ACCOMMODATE ONLY 350 STUDENTS OR LESS, DESPITE AN AVERAGE ENROLLMENT OF 488 IN 2016-17.



- Crumbling Ceilings
- Leaky Roofs

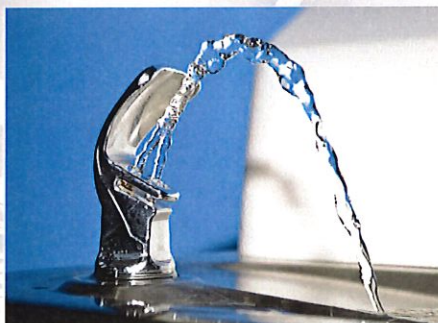
## Health Hazards

Poor facility conditions negatively affect student health, thinking, and performance



### Lighting & Views

### Dust, Pests, Mold & Moisture



### Water Quality

»»» Lead Exposure

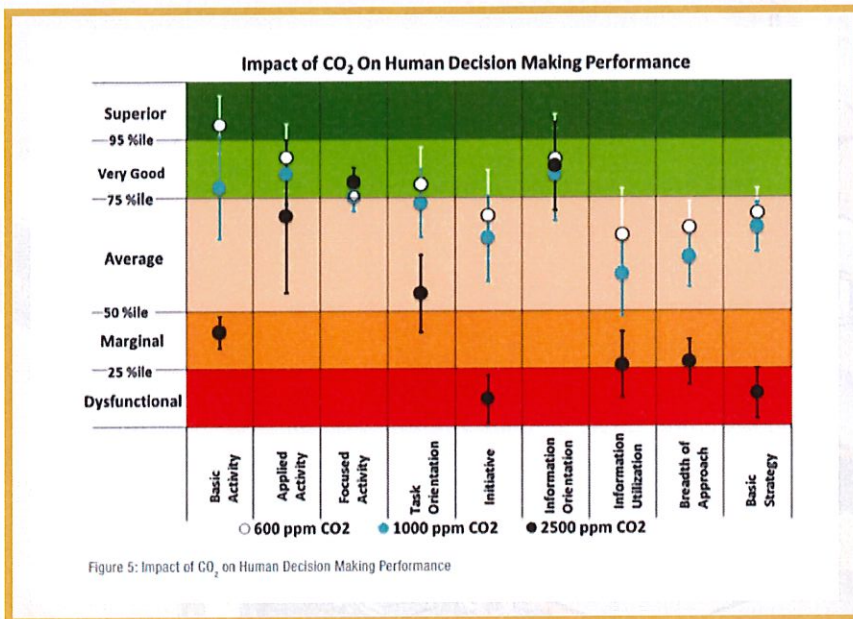


# Health Hazards

continued

## Ventilation & Indoor Air Quality

Unhealthy CO2 levels impact cognitive performance and decision making



Sources: School Building Authority State of Rhode Island Schoolhouses September 2017 Report, Coley, D. A., et al. (2007). The effect of low ventilation rates on the cognitive function of a primary school class. International Journal of Ventilation, 6(2), 107-112.

## Racial and Economic Impact

Often school buildings in the worst condition exist in low-income communities of color



**9th**

Highest Asthma Rate in the Nation

In Providence, 24 schools are within 1000 ft of a major highway

**10.9%**

Percentage of RI Children with Asthma

OVER **70%**

Pediatric asthma ER visits are children on Medicaid

**RI asthma emergency department rates (per 1000):**

1. Providence: 13.7
2. Central Falls: 11.5
3. Newport: 10.8
4. Woonsocket: 10.7
5. Pawtucket: 9.7

Source: Rhode Island Department of Health, School Building Authority State of Rhode Island Schoolhouses September 2017 Report

Total CO2 from Schools  
Statewide: Estimate of  
**105,913 Metric Tons of CO2**  
**Equivalent** per year



**12,754**

Homes' energy use  
for one year

**Total Energy Costs:**

\$15.5-17.4 Million spent annually on **electricity**  
\$8.2 -10.7 Million spent annually on **natural gas**  
\$4.3-7.1 Million spend annually on **No. 2 Fuel Oil**



## Environmental Impact

Energy use from buildings  
represents a significant share  
of the state's dependence on  
fossil fuels

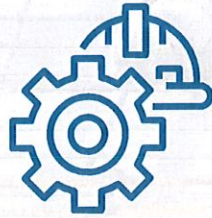
## OUR SOLUTION

### ALL RHODE ISLAND K-12 PUBLIC SCHOOLS MODERNIZED AND DECARBONIZED BY 2030

- SCHOOL CONSTRUCTION BOND
  - ZERO CARBON INCENTIVES
  - STRONG LABOR STANDARDS
  - ENSURING SCHOOL CONSTRUCTION REGULATIONS ARE UPDATED TO INCLUDE THE NEWEST CLIMATE BUILDING STANDARDS (NECHPS 4.0)
  - TECHNICAL ASSISTANCE FOR SCHOOL DISTRICTS



# SCHOOL IMPROVEMENTS



- HVAC repair or replacement
- Lead pipe removal
- Window and door replacement
- Building envelope improvements
- Roof repair or replacement
- Solar installation
- Energy efficiency upgrades
- Lighting upgrades
- Lead, mold, and asbestos abatement
- Fire safety upgrades
- Electrical upgrades
- Solar power systems
- Plumbing repairs
- Insulations
- and MANY MORE

# ADDITIONAL RECCOMENDATIONS

- Building Assessments
- Energy Audits
- Feasibility studies
  - Solar
  - Geothermal
  - Wind
- Job Training for School Staff



# THE OPPORTUNITY

## JOB CREATION

Transitioning all K-12 public schools in RI to net-zero would create 11,209 direct jobs over 9 years

## COST SAVINGS

If all energy demand is fully met by on-site renewable energy school districts can save approximately \$35.2 M

## RACIAL AND ECONOMIC EQUITY

Our first investments need to be prioritized into communities of color and low-income communities, where we've seen decades of disinvestment

## EMISSIONS REDUCTION

We have the opportunity to slash carbon emissions by 105,913 metric Tons of CO2-eq

# TYPES OF JOBS

Electricians  
Painters  
Laborers  
Plumbers and Pipefitters  
Welders  
Sheetmetal Workers  
HVAC Technicians  
Glaziers

Solar Technicians  
Carpenters  
Engineers  
Steamfitters  
Roofers  
Insulators  
Operating Engineers  
Architects  
Structural Iron and Steel Workers



# Success Stories

East Providence  
High School



Batesville, AR  
1,500 Solar Panels



**JOIN OUR MOVEMENT TO MAKE  
SCHOOLS AND THE PLANET,  
HEALTHIER AND SAFER FOR ALL**

Add your name to the pledge  
<https://bit.ly/GreenHealthySchoolsRI>

Host a Virtual Coffee Hour or Dinner Party

Contact Us: [erica@climatejobsri.org](mailto:erica@climatejobsri.org)



# TAKE ACTION!

[climatejobsri.org](http://climatejobsri.org)

