

EC4 ADVISORY
BOARD
DECEMBER 1, 2022

Agenda

- Welcome & Opening Remarks
- Review of September 14, 2022 Meeting Minutes (for action)
- Welcome/Introduction of New Advisory Board Members
- News from the RIEC4
- Review of 11/29 Climate Justice Hour
- A Look Back – Review of Climate Justice and Dashboard Actions in 2021/2022
- Looking Ahead – Discussion of Member’s Priorities for 2023 Legislative Session
- Other Business/Announcements
- Discussion of 2023 Meeting Schedule
- Public Comment
- Adjourn



**EC4
ADVISORY
BOARD
MEMBERSHIP**

- **Diane Williamson** appointed by the Governor
- **Rachel Calabro** appointed by the Governor
- **Emily Koo** appointed by the Governor
- **Janice Falconer** appointed by the Governor
- **Sven Risom** appointed by the Governor

- **Amy Rainone** appointed by the House
- **David Caldwell Jr.** appointed by the House
- **Patrick Crowley** appointed by the House
- **Priscilla De La Cruz** appointed by the House

- **Eric Wagner** appointment by the Senate
- **Kenneth Filarski** appointment by the Senate
- **Pam Rubinoff** appointment by the Senate
- **Sheila Dormody** appointment by the Senate

RHODE ISLAND
CLIMATE JUSTICE
PRIORITIES

DRAFT PROPOSED BY
THE EC4 TO THE EC4AB



Conduct a gap analysis of statewide policies and programs



Prioritize and improve public engagement and input throughout development and decision-making process



Create or improve access to programs, resources and information



Mitigate and remove burdens from environmental justice communities

EC4AB REVIEW - EARLY THEMES

Provide clear definitions, values, acknowledgements and principles

Prioritize this work with staffing and training

Meet people where they are

Proceed at the pace of trust

Address cumulative impacts
Acknowledge and rectify

Address the representation gap on state boards and decision-making groups

Partner with community-based organizations and compensate them

Move toward collaborative governance with environmental justice communities

FINDINGS

The EC4AB supports the proposed climate justice priorities.

The EC4 should designate staff to continue to develop the priorities by partnering with frontline communities.

Frontline communities should have the final say determining the next steps in adopting the climate justice priorities and be a compensated partner in moving them forward.

Leverage federal funding for workforce development that will advance climate justice.

RECOMMENDED ACTIONS



Finalize the Climate Justice Priorities



Expand State Capacity to Advance Climate Justice



Integrate Climate Justice Across State Functions



Develop and Expand State Partnerships



Finalize the Climate Justice Priorities

1. Engage with residents of environmental justice areas and with relevant community-led organizations to vet the climate justice priorities.
2. Articulate the values and principles that the State is trying to achieve through the priorities.
3. Compensate community partners for the expertise they will provide.
4. Follow the Platinum Rule: Treat others the way they want to be treated.
5. Advance the implementation of the priorities while continuing to integrate the community response.



Finalize the Climate Justice Priorities

6. Allow time to build effective, trusting partnerships.
7. Map existing environmental justice areas of Rhode Island.
8. Provide clear definitions of key terms including environmental justice and climate justice.
9. Create a framework acknowledging past and current harms to frontline communities.
10. Review the Spectrum of Community Engagement (slide 13) and establish goals and strategies for state action.



Expand State Capacity to Advance Climate Justice

11. Hire and assign staff, and contract with community-based consultants and organizations, to center marginalized communities most affected by climate injustice in decision making, policies and practices.

12. Provide training for staff to apply climate justice principles in all areas of work.

13. Develop an open and transparent process for candidates to appoint to boards and commissions with diverse backgrounds.

14. Identify and address barriers to participation in public meetings for board members and public participants.

15. Leverage federal funding opportunity to invest in community-led solutions that advance climate justice.



Integrate Climate Justice Across State Functions

16. Review state programs to align and maximize their potential benefits toward climate justice. (Slide 14)

17. Expand the review of existing programs to include Workforce Development, RI Housing and others.

18. Analyze both gaps and potential connections of existing state programs to maximize the benefits.

19. Focus State climate change actions on community level solutions in making the default choice the best choice, rather than depend on individual consumer actions.

20. Develop a curriculum for integrating climate change across all grade levels.

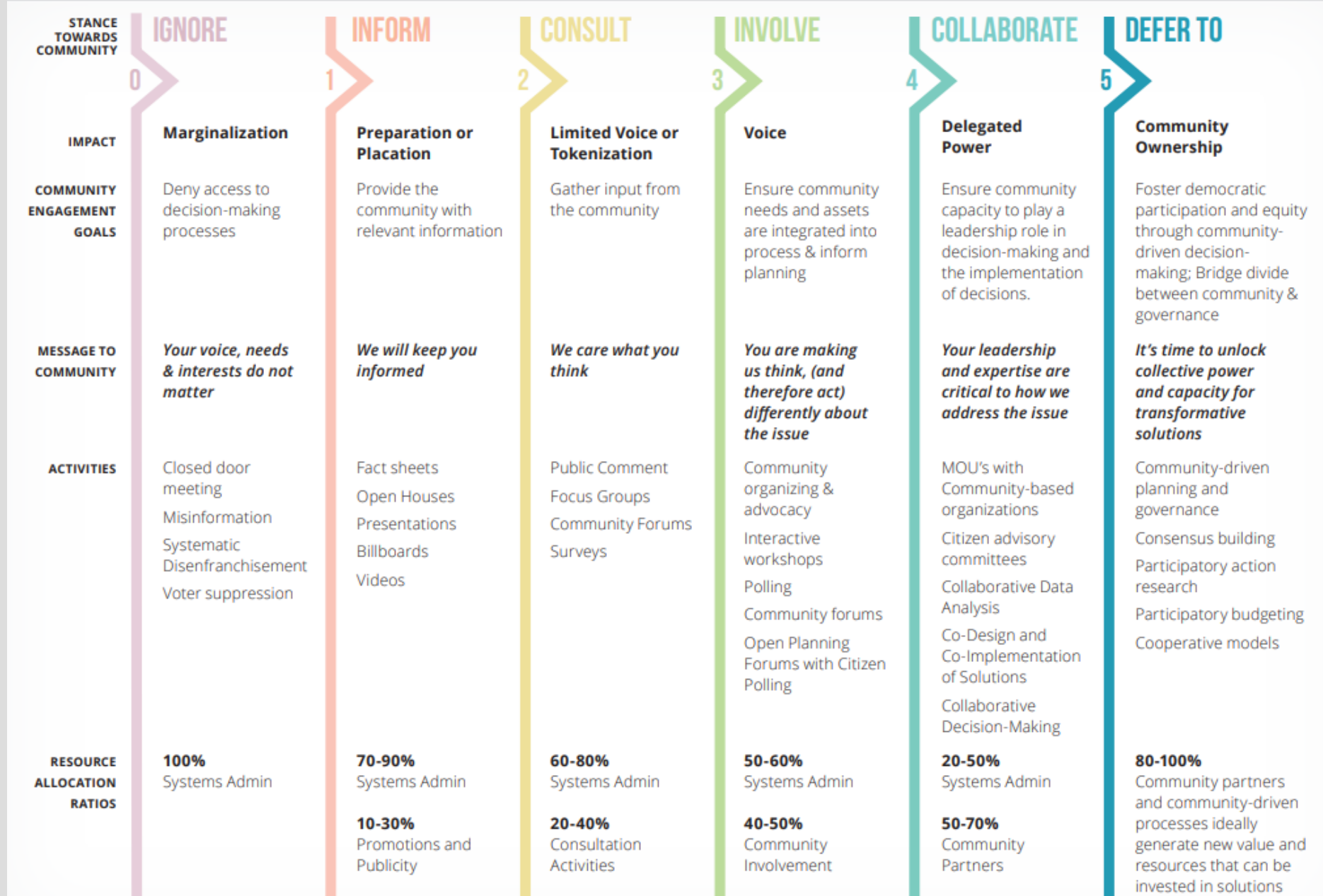
21. Account for cumulative impacts of environmental degradation and advance restoration in environmental justice areas.



Develop and Expand State Partnerships

22. Collaborate with and support the Health Equity Zones and expand the model for community-led prioritization for state funding.
23. Explore opportunities to integrate climate justice work into the Equity Council and other cross-cutting state initiatives.
24. Partner with the City of Providence Sustainability Office and the Racial and Environmental Justice Committee to apply the lessons from the Providence Climate Justice Plan.
25. Leverage the wealth of private resources and expertise from across Rhode Island's academic, non-profit and private business sectors to support climate justice strategies.

▶▶▶▶▶ INCREASED EFFICIENCY IN DECISION-MAKING AND SOLUTIONS IMPLEMENTATION ▶▶▶▶▶ EQUITY



FINAL RECOMMENDATIONS FOR CLIMATE DASHBOARD

CLIMATE DASHBOARD RECOMMENDATIONS

Metrics

1. Tier I: Continue reporting and tracking toward the goal
2. Tier I: Continue reporting and establish a goal
3. Tier I: Begin reporting and establish a goal
4. Tier II: Develop strategy to report and establish a goal
5. Report climate change impacts

Additional Content

- Spotlight issues and topics
- Maps and visualizations
- Best practices

TIER I: CONTINUE REPORTING AND TRACKING TOWARD GOAL

Greenhouse Gas Emission Reductions

Goals:

- 10% below 1990 levels by 2020
- 45% below 1990 levels by 2030
- 80% below 1990 levels by 2040
- net-zero emissions by 2050
- to include land use/land conversion

Clean Electricity

Goal: 100% by 2033 renewable energy standard

Municipal Resilience Program

Goal: 100% municipal participation

TIER I: CONTINUE REPORTING AND ESTABLISH GOAL

EV Registrations in RI

Emissions Avoided by Energy Efficiency Investments

Green Jobs in RI

Protected Lands by Acres and Type

Land Use and Land Conversion

TIER I: BEGIN REPORTING AND ESTABLISH GOAL

Incentives

**EV by amount and
distribution**

Solar

Heat Pumps

EV Charging Infrastructure

Vehicle Miles Travelled

EVs in State Fleet

Fuel Sales

Real Jobs Data

RIPTA Ridership

Energy Burden

RISE Energy Audits

C-PACE / EBF

Home Heating by Fuel Type

Energy Efficiency Savings

TIER II: DEVELOP STRATEGY TO REPORT AND ESTABLISH GOAL

Solid waste and recycling
municipal recycling rates,
food waste, methane

Advanced Clean Trucks (ACT)

State Fleet Mileage

Biodiesel Fuel Use

Progress towards RI Mobility Plan

Water Consumption

Climate Literacy in Public Schools

Investments in EJ communities (Justice 40)

Union Clean Energy Training Program Participants

Higher Education Graduates in Green Fields

Apprentice Demographics

Job Conversions

Buildings Fuel Heating Consumption by Type

Compliance with the RI Green Buildings Act

Buildings that Exceed Minimum Building Code

Food Security and Food Access

REPORT CLIMATE CHANGE IMPACTS

(See Health Department proposed Metrics)

Precipitation

Sea level rise

Temperature

Drought

Air Quality

SPOTLIGHT ISSUES AND TOPICS

Traffic Congestion Mitigation and Air Quality Planning
CCRI Offshore Wind Training Program
Electric School Buses
Green & Healthy Schools
EVITP Certifications
Green Buildings
Community Choice Aggregation for Municipalities
Municipal Resilience Projects
Health Equity Zones
Large Scale Energy Storage

MAPS AND VISUALIZATIONS

Define RI Environmental Justice Areas

EV Registrations

Stormtools

Land Conservation and Agricultural Lands

CRMC Shoreline Change Maps

Heat Islands

Tree Cover and Tree Equity Score Analyzer

Land Use and Land Cover

Impervious Surfaces

Social Vulnerability Index

Most maps and resources listed here are available via the state's RIGIS system and many are linked off the RIDEM Maps page.

RECOMMENDED DASHBOARD PRACTICES



Manipulable/interactive data accompanied by explanations



Easily viewable and understandable trends



Inexpensive interface programs



Inclusion of Climate Equity (mapping and criteria)



Make accessible in multiple languages (Spanish translation)



Quarterly updating



Public feedback on the website (for clarification or inquiries)



Align dashboard metrics with data that is already collected

EC4AB

Next Meetings

Last Wednesdays of the month

Next: January 25, 2023

Consider shifting one hour later: 11:30am-1:00pm